



# GMT MONTHLY MEMBERSHIP PROGRESS REPORT

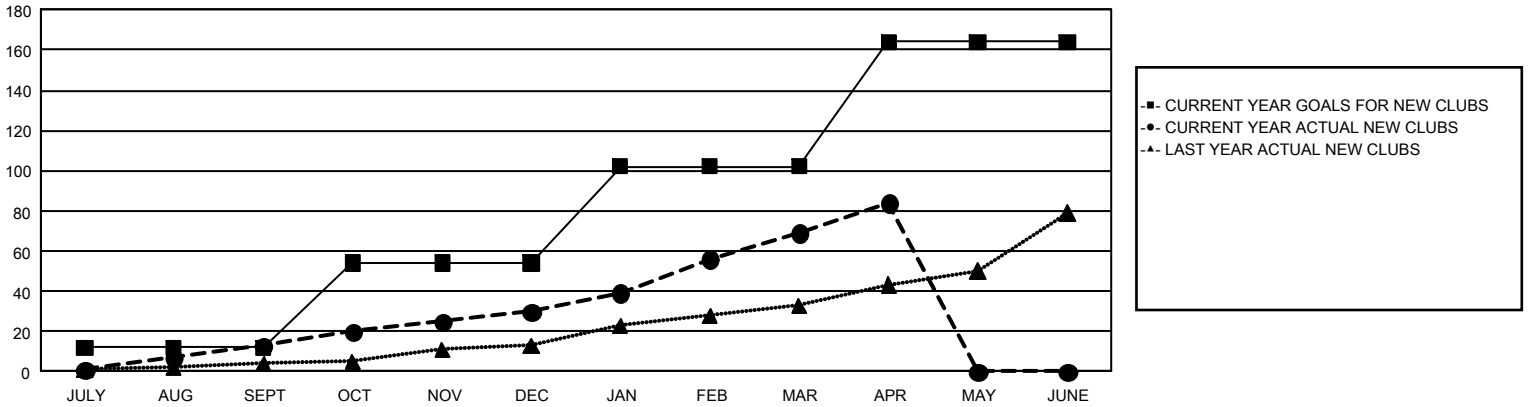
## GAT Constitutional Area 4

Results as of: 4/30/2024

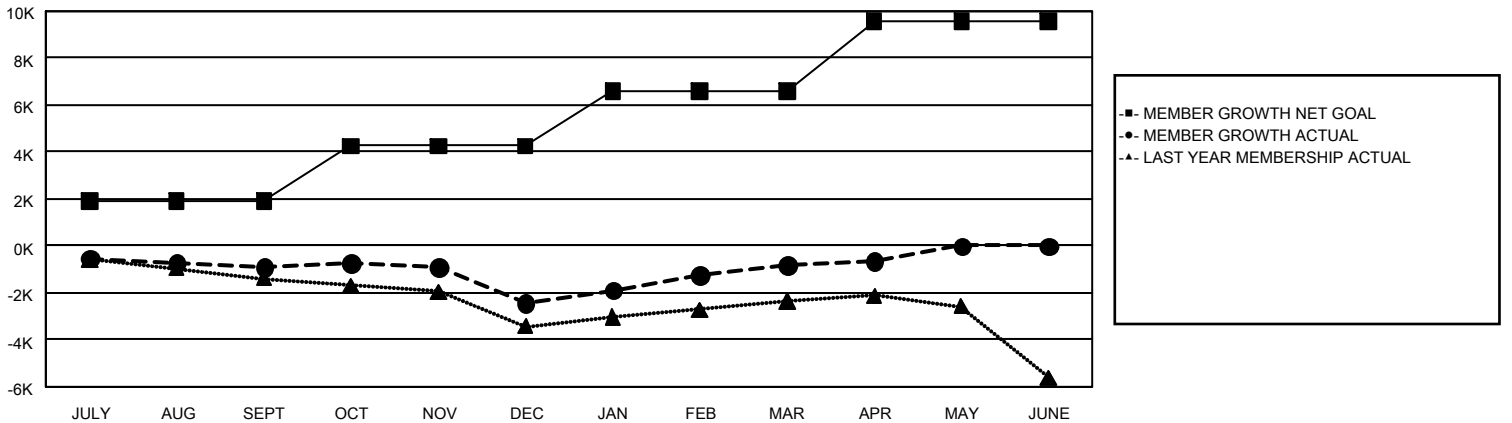
REPORT DOES NOT INCLUDE CLUBS IN UNDISTRICTED AREAS.

Clubs				Members			
RESULTS FOR 2023-2024				RESULTS FOR 2023-2024			
QUARTER	NEW CLUB GOAL	NEW CLUBS	DROPPED CLUBS	QUARTER	MEMBER GROWTH NET GOAL	MEMBER GROWTH ACTUAL	DROPPED MEMBERS ACTUAL (including transfers)
JULY/AUG/SEPT	12	13	56	JULY/AUG/SEPT	1,904	3,462	3,882
OCT/NOV/DEC	42	17	44	OCT/NOV/DEC	2,360	4,279	5,372
JAN/FEB/MAR	48	39	25	JAN/FEB/MAR	2,330	5,665	3,576
APR/MAY/JUNE	62	15	13	APR/MAY/JUNE	2,988	1,649	1,320

**GOALS AND ACTUAL NEW CLUBS CUMULATIVE**



**GOALS AND ACTUAL MEMBERS CUMULATIVE**



<b>DROPPED CLUBS: 138</b>	4,889 CLUBS OF 8,940 ADDED 1 OR MORE NEW MEMBERS	<b>GENDER DISTRIBUTION</b> MALE 165,015 (74.21%) FEMALE 57,326 (25.78%)
<b>DROPPED MEMBERS</b> DECEASED 1,954 CLUB CANCELLED 548 OTHER 11,640 <b>TOTAL 14,142</b>	<a href="#">CLICK HERE FOR CUMULATIVE MEMBERSHIP DATA</a>	TOTAL FAMILY UNIT MEMBERS 11,154  FAMILY MEMBERS PAYING HALF DUES 5,796